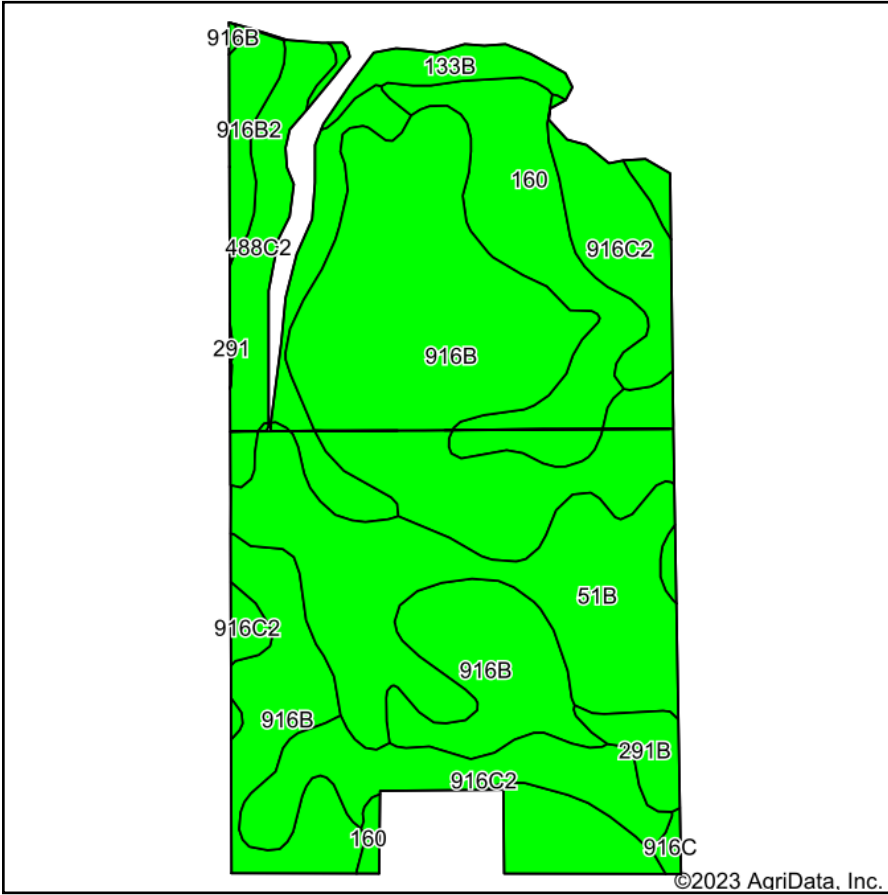
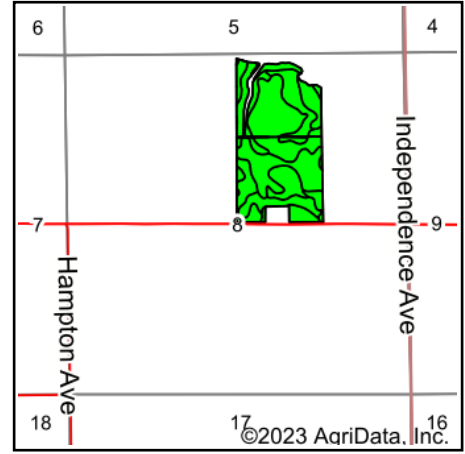


Soils Map



Soils data provided by USDA and NRCS.



State: **Iowa**
 County: **Muscatine**
 Location: **8-76N-3W**
 Township: **Seventy-Six**
 Acres: **68.68**
 Date: **11/2/2023**



Maps Provided By:



© AgriData, Inc. 2023

www.AgriDataInc.com



Area Symbol: IA139, Soil Area Version: 29

Code	Soil Description	Acres	Percent of field	CSR2 Legend	Non-Irr Class *c	CSR2**	CSR	
916B	Downs silt loam, sandy substratum, 2 to 5 percent slopes	29.95	43.6%		Ile	88	77	
51B	Vesser silt loam, 2 to 5 percent slopes	12.21	17.8%		Ilw	75	65	
916C2	Downs silt loam, sandy substratum, 5 to 9 percent slopes, eroded	8.47	12.3%		IIle	80	62	
160	Walford silt loam, 0 to 2 percent slopes	7.14	10.4%		Ilw	82	65	
488C2	Newvienna silt loam, 5 to 9 percent slopes, moderately eroded	6.17	9.0%		IIIle	77	71	
133B	Colo-Ely complex, 0 to 5 percent slopes	1.96	2.9%		Ilw	86	75	
916B2	Downs silt loam, sandy substratum, 2 to 5 percent slopes, eroded	1.40	2.0%		Ile	84	75	
291B	Atterberry silt loam, 2 to 5 percent slopes	1.14	1.7%		Ile	85	90	
916C	Downs silt loam, sandy substratum, 5 to 9 percent slopes	0.24	0.3%		IIIle	82	65	
Weighted Average						2.22	82.9	71.3

**IA has updated the CSR values for each county to CSR2.

*c: Using Capabilities Class Dominant Condition Aggregation Method

Soils data provided by USDA and NRCS.